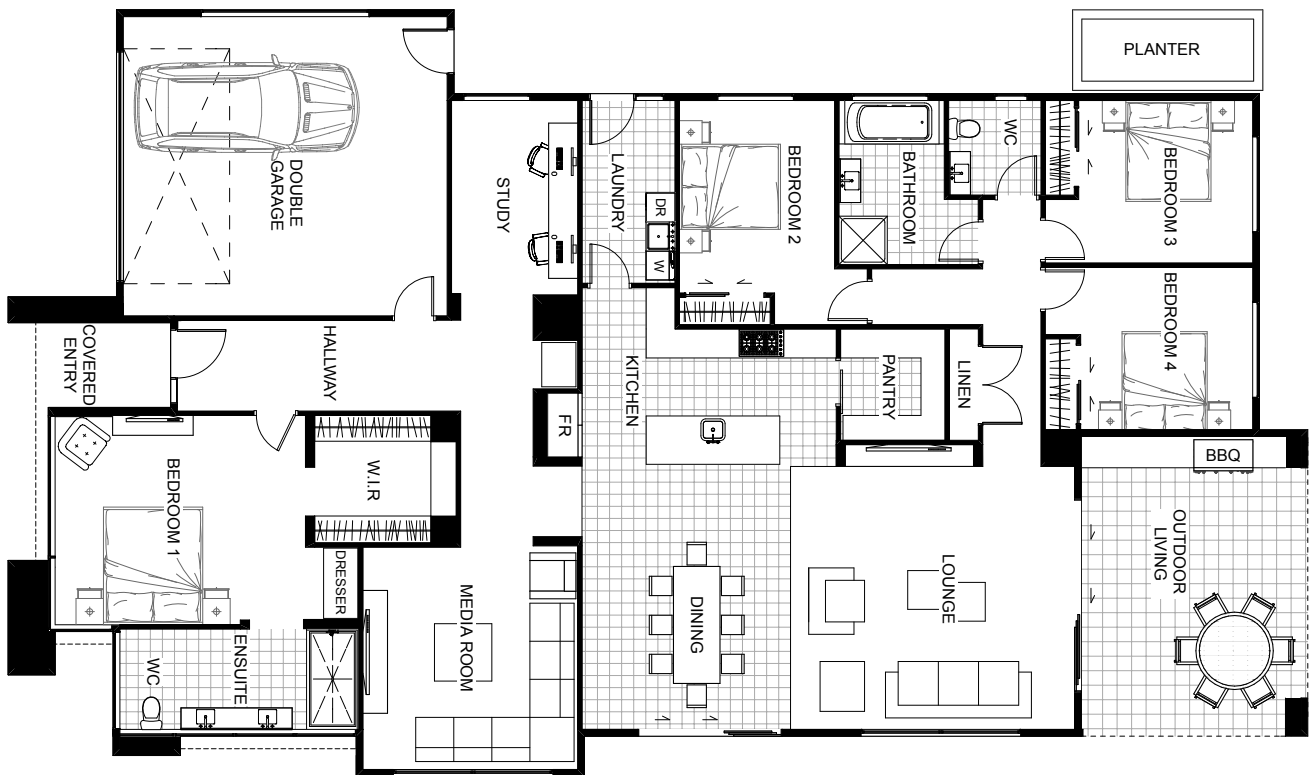






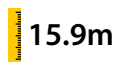
Warrington



The Warrington is the perfect fusion between contemporary design, style and functionality. As a four bedroom family home, it offers the complete package with plenty of entertaining space with home theatre and open plan living that optimises natural light at every opportunity. Positioned near the entry is the master bedroom that promises a tranquil retreat separated from the remainder of the home. It boasts an impressive walk-in robe and inviting ensuite with double vanity, large shower and separate toilet. The kitchen and expansive living areas radiate a sense of warmth and openness that inspires and delights.



Floor Area: 315m²

 2  4  2  26.9m  15.9m

ABN. 57152335021

Contact Jason Woodhams:

Phone: 04 0951 5051

Email: jasonwoodhams@bigpond.com

Visit us online : www.woodhamsbuilders.com.au

woodhams
BUILDERS

