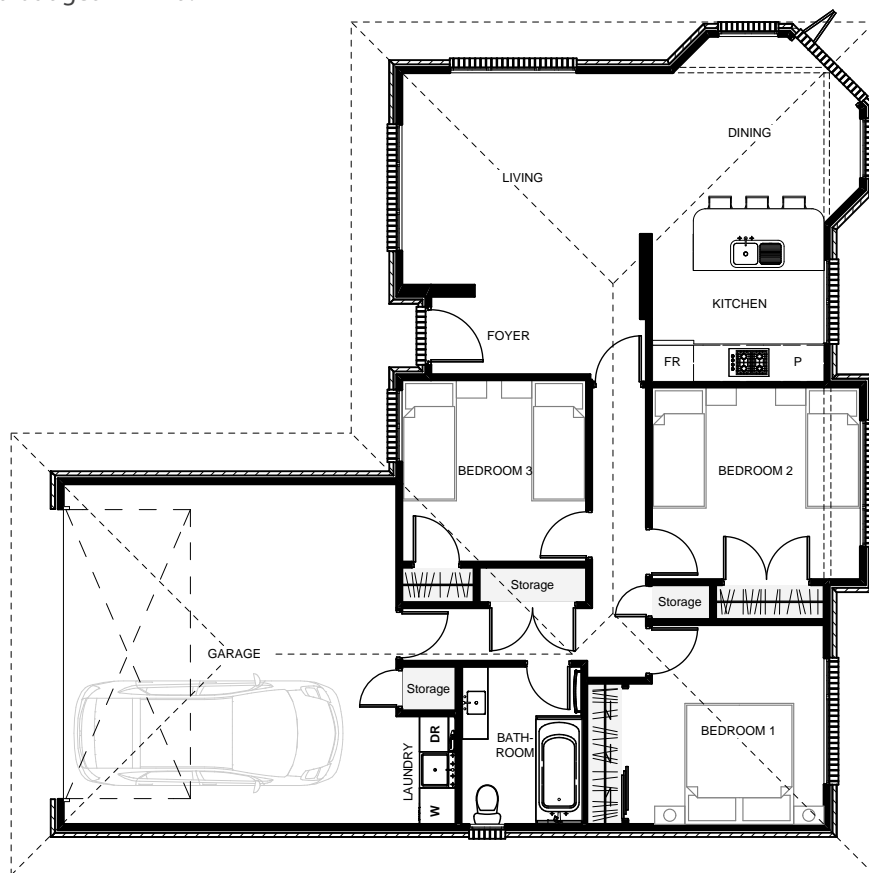


Torrance



The 'Torrance' is a traditional brick home designed for a cost effective build with all necessities suited to today's living. Cladding changes can easily be changed from brick to weatherboard or any other cladding type to achieve your desired look. Double garaging with internal access, plenty of storage & great indoor/ outdoor flow make this a smart choice for anyone looking to build with a budget in mind.



Floor Area: 127m²

2 3 1 13.4m 13.2m

ABN. 57152335021

Contact Jason Woodhams:

Phone: 04 0951 5051

Email: jasonwoodhams@bigpond.com

Visit us online : www.woodhamsbuilders.com.au

woodhams
BUILDERS

