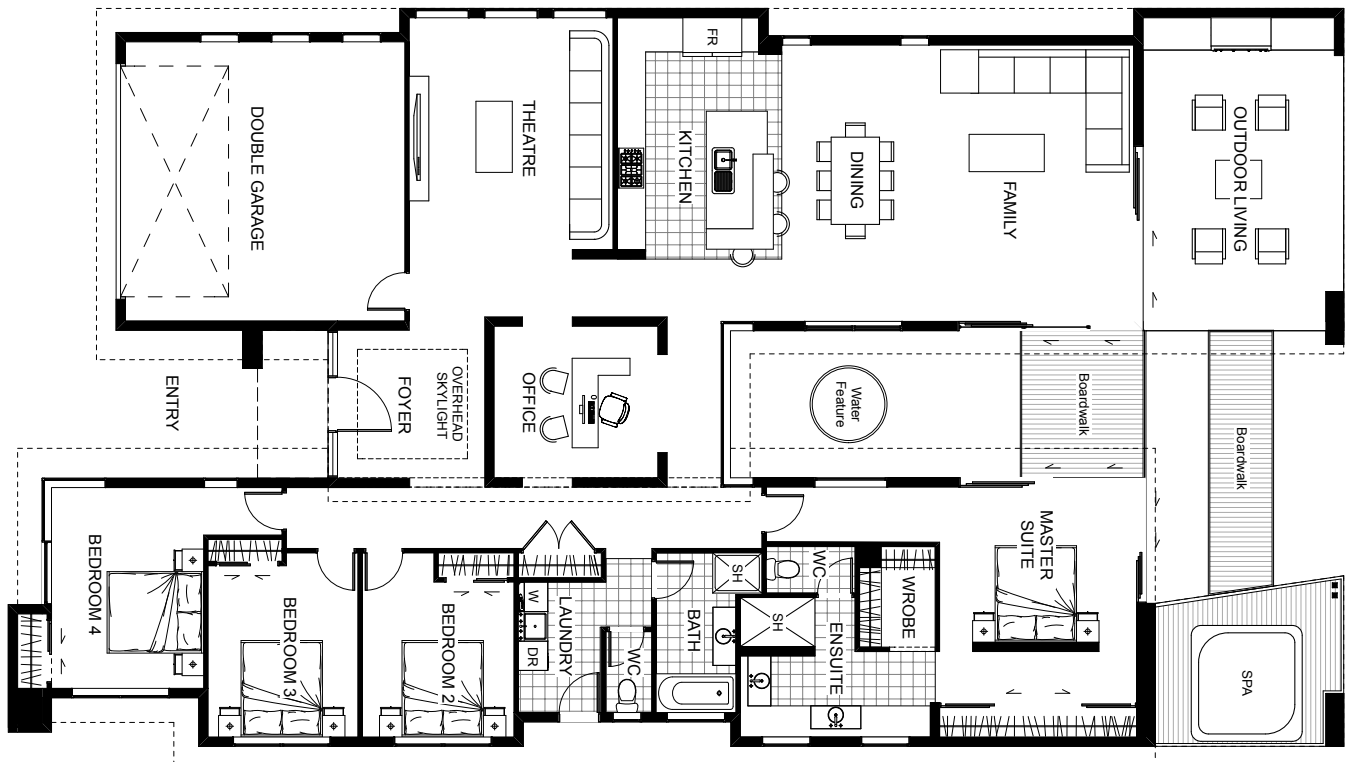





Mossburn



Defined by striking contemporary design is the great Mossburn. Intelligent division of space has living and entertaining areas in one wing and bedrooms in a separate but parallel wing. The connection is a dramatic central garden or waterway. With an innovative light-filled office, kitchen, spacious living areas, large outdoor covered area, media room and indulgent master suite, this is a home with a difference.



Floor Area: 276m²

 2
  4
  2
  27.2m
  15.0m

ABN. 57152335021

Contact Jason Woodhams:

Phone: 04 0951 5051

Email: jasonwoodhams@bigpond.com

Visit us online : www.woodhamsbuilders.com.au

woodhams
BUILDERS

