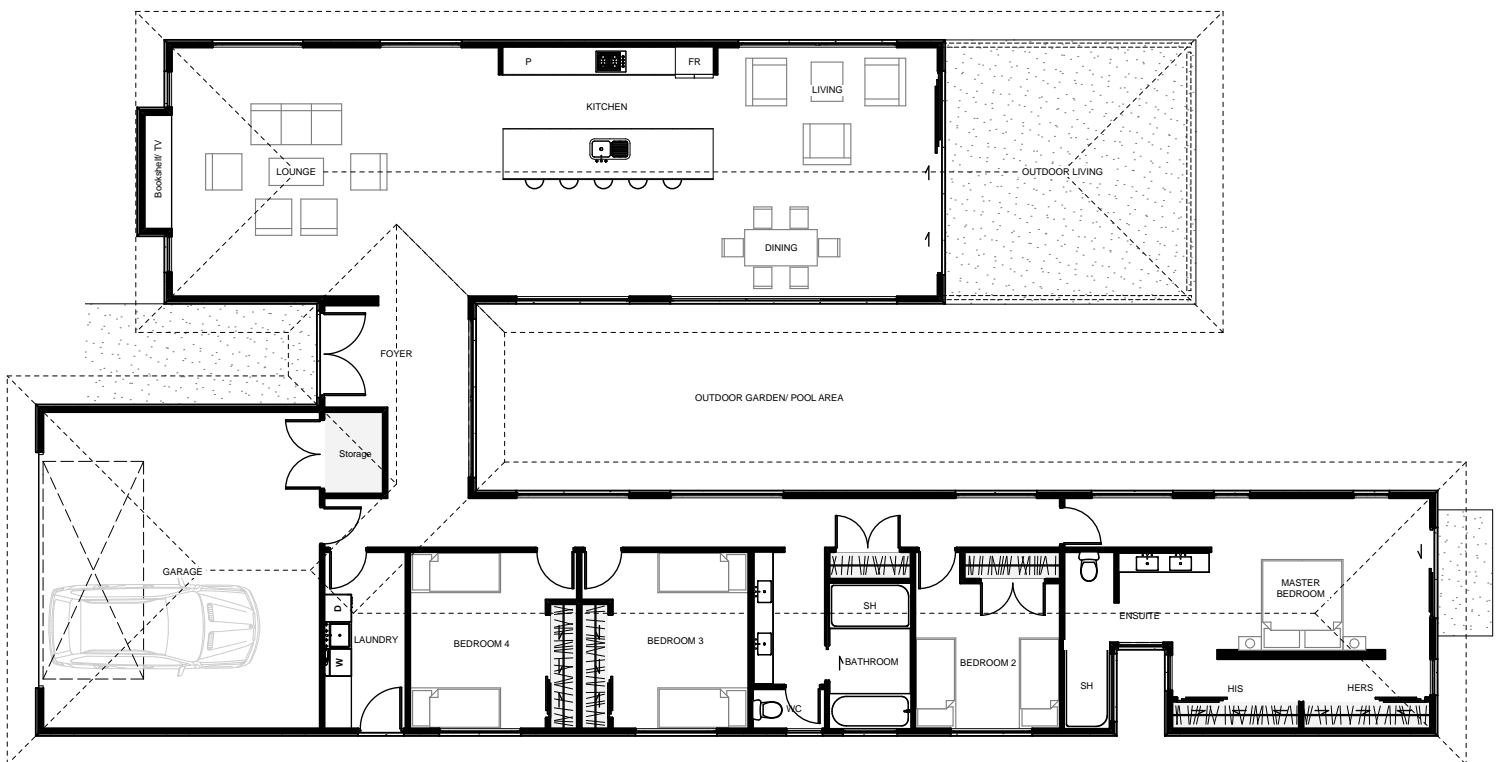


Montana



The 'Montana' is a cleverly designed 4 bedroom 'H' shaped home which separates living from bedrooms into two distinctive wings. An opening between the two wings gives plenty of space to create either a natural garden outlook or a lap pool configuration. The master bedroom is generous in size and flows nicely from the bed, through a reverse wardrobe layout to an open designed ensuite. The main living, large in size, flows seamlessly between living, kitchen, dining & outdoor living, which has great roof cover for enjoyable entertainment no matter what the weather.



Floor Area: 240m²

2 4 2 30.8m 15.0m

ABN. 57152335021

Contact Jason Woodhams:

Phone: 04 0951 5051

Email: jasonwoodhams@bigpond.com

Visit us online : www.woodhamsbuilders.com.au

woodhams
BUILDERS

