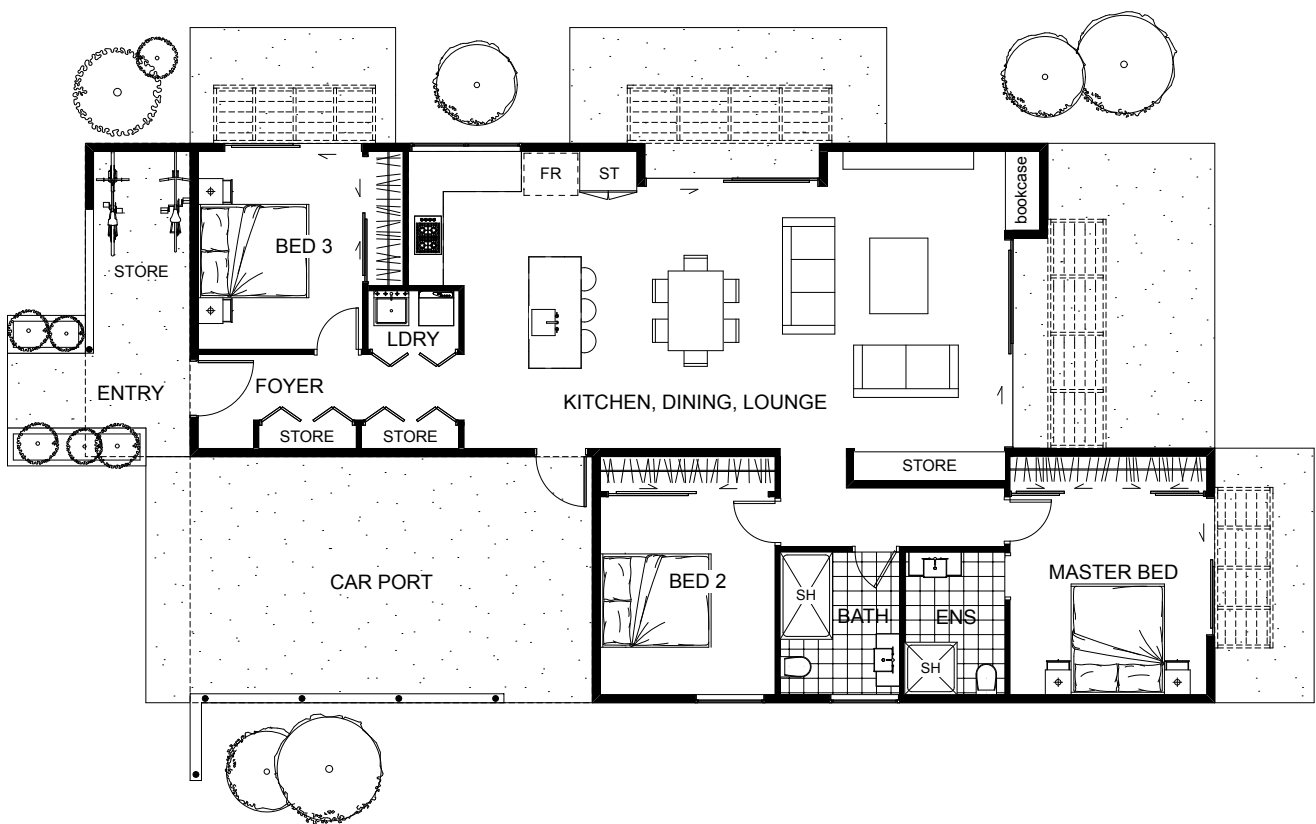




This design uses straight lines to capture simplicity and functionality of a living space. It features an open kitchen, dining, lounge area framed with the sliding doors that provide gorgeous views on the decking and plenty of sunlight. Standing in the open area, looking through the sliding doors, a distinction between the indoors and outdoors blurs and the sense of connectedness with the surroundings becomes one. A carefully placed carport, one master and two bedrooms provide the sense of functionality, whereas the outer appearance of the house gives it that contemporary vibe and alfresco flow.



Floor Area: 121m²

1-2
 3
 2
 19.4m
 9.6m

ABN. 57152335021

Contact Jason Woodhams:

Phone: 04 0951 5051

Email: jasonwoodhams@bigpond.com

Visit us online : www.woodhamsbuilders.com.au

woodhams
BUILDERS

