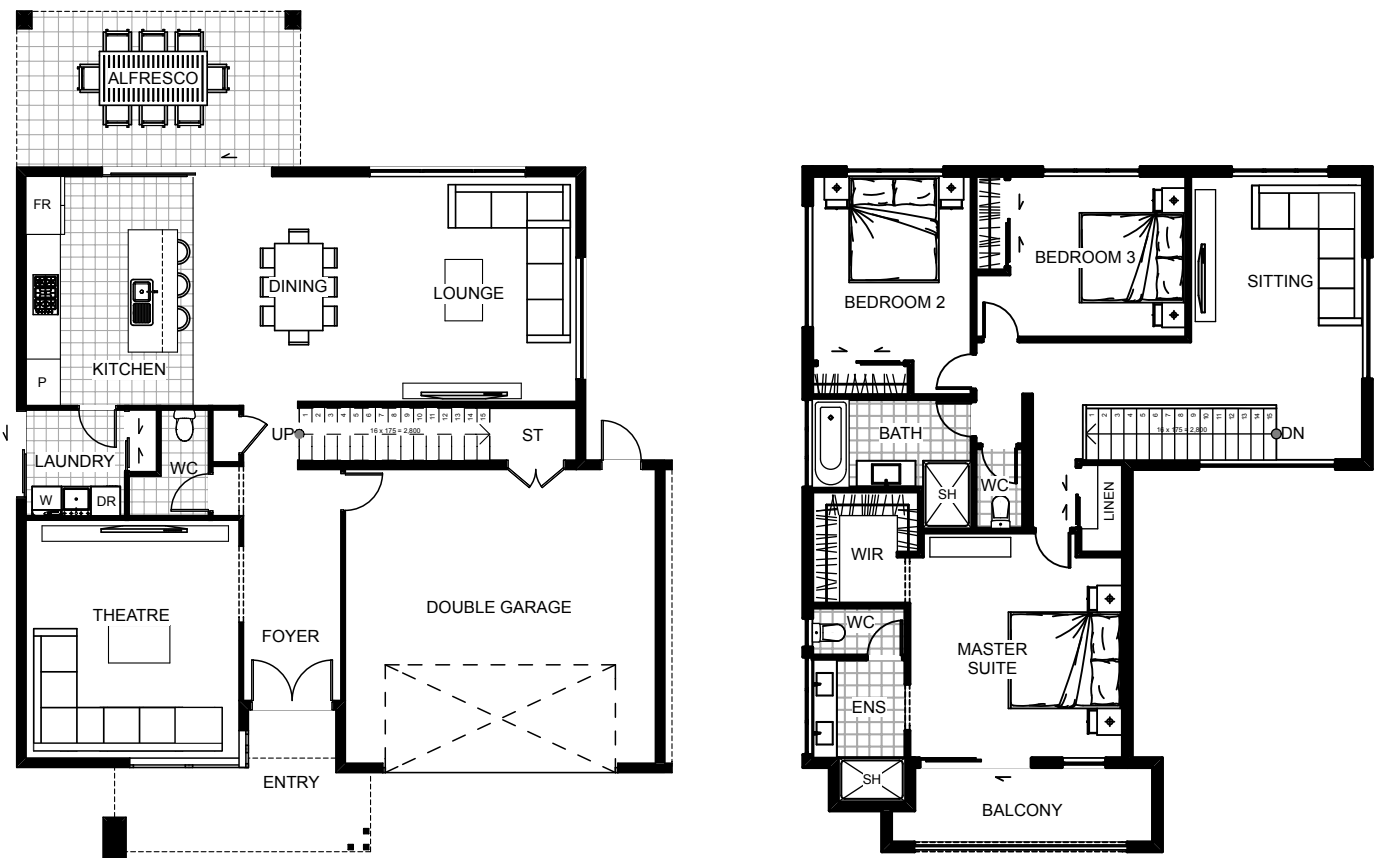







Mayfield



Enjoy the Mayfield with the simplicity of open plan living, an alfresco area with overhead cover and your very own theatre room. Kick back upstairs in the private sitting with surround views, all amenities closely located. Master suite living comes with the added benefit of a large walk in robe, twin vanity ensuite layout with private toilet and your very own balcony! This home has architectural style, is modern and makes a great lasting impression.



Floor Area: 274m²

 2
  3
  2
  13.4m
  17.2m

ABN. 57152335021

Contact Jason Woodhams:

Phone: 04 0951 5051

Email: jasonwoodhams@bigpond.com

Visit us online : www.woodhamsbuilders.com.au

woodhams
BUILDERS

