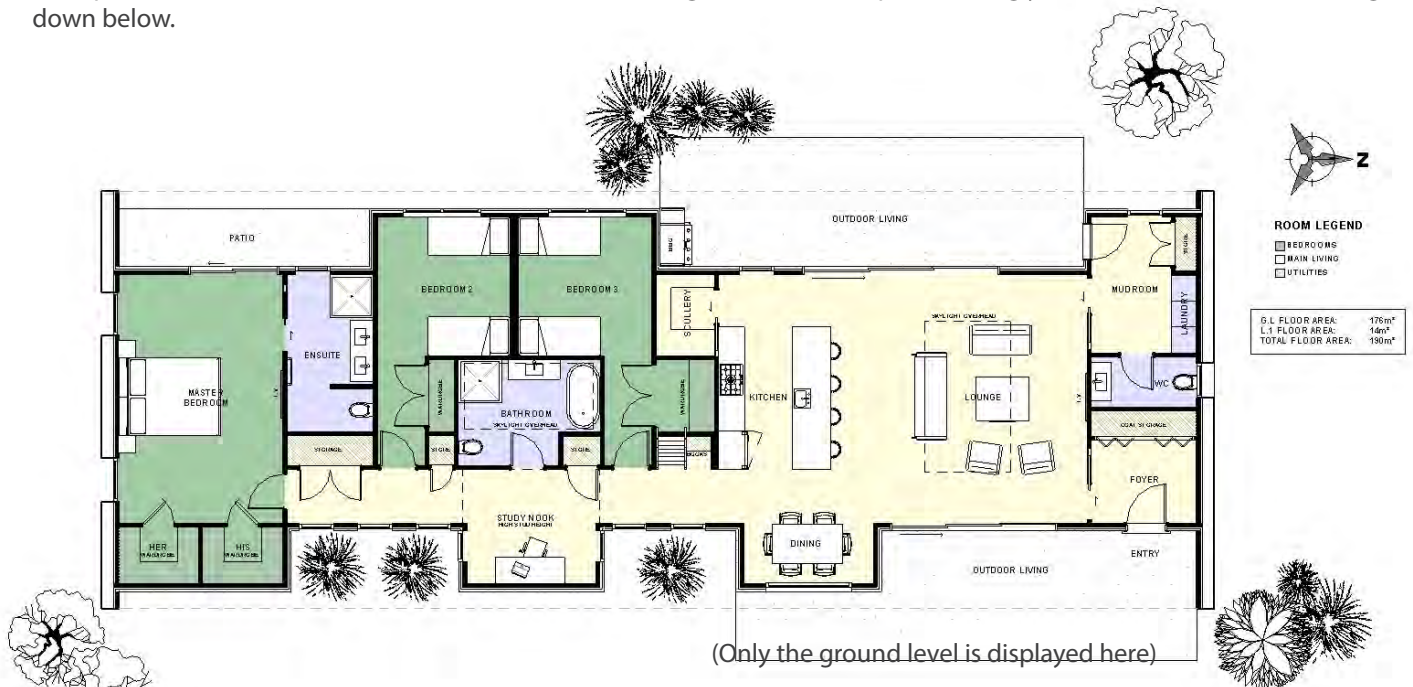




The 'Johnston' is a long narrow fun packed home with interesting spaces and forms. Pictured above, the 'Johnston' is clad in timber weatherboard, timber panelling and standing seam roofing which melts down over the ends of this home. The main living has a sloping ceiling and is open plan with the dining offset in it's own module with double height glazing. The study is an open study in the hallway opposite two mirrored bedrooms which enclose the centralised bathroom. Because the bathroom is internal, a large opening skylight overhead opens the full height room, letting any moisture and steam straight outside making the bathroom a very healthy, light space. A very generously sized master bedroom has an ensuite and a 'His & Her' wardrobe. Not shown in below is the kids lounge/ library which is accessed at the hallway's entrance via a built in ladder. This space has it's own external windows but also has sliding windows that open allowing you to look onto the main living down below.



Floor Area: 190m²

0 3 2 25.2m 9.7m

ABN. 57152335021

Contact Jason Woodhams:

Phone: 04 0951 5051

Email: jasonwoodhams@bigpond.com

Visit us online : www.woodhamsbuilders.com.au

woodhams
BUILDERS

