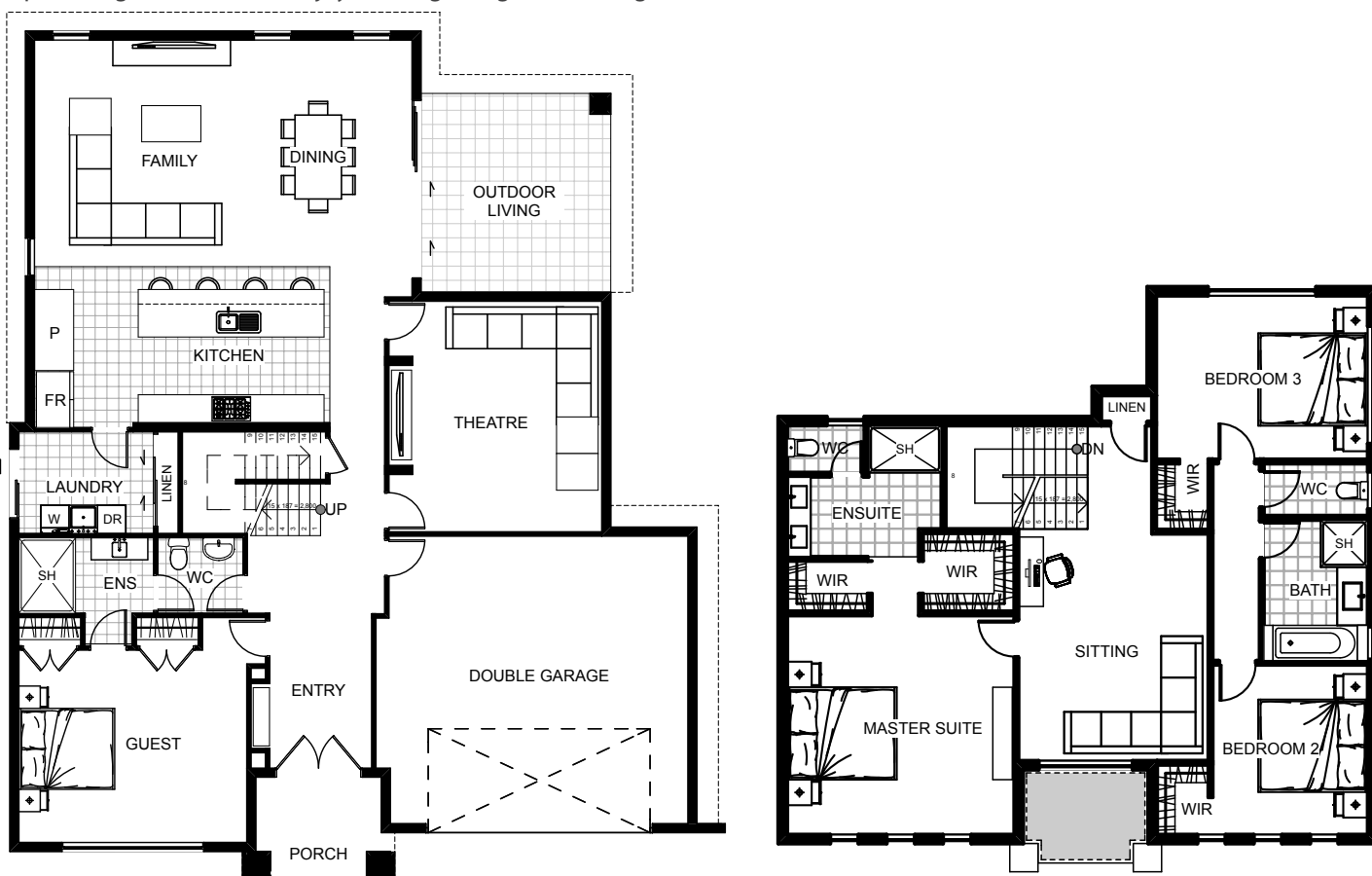


Hampton



Grand and luxurious stands the proud Hampton with four bedrooms and two ensuites. Downstairs the chefs kitchen, family and dining are free-flowing with a private theatre and guest suite. Upstairs a master suite includes a his and her walk-in robe and spacious ensuite including a double vanity. Two bedrooms share a private bathroom and toilet with the upstairs living providing more room to enjoy such a great, grand looking home.



Floor Area: 328m²

 2
  4
  3
  15.2m
  18.0m

ABN. 57152335021

Contact Jason Woodhams:

Phone: 04 0951 5051

Email: jasonwoodhams@bigpond.com

Visit us online : www.woodhamsbuilders.com.au

woodhams
BUILDERS

