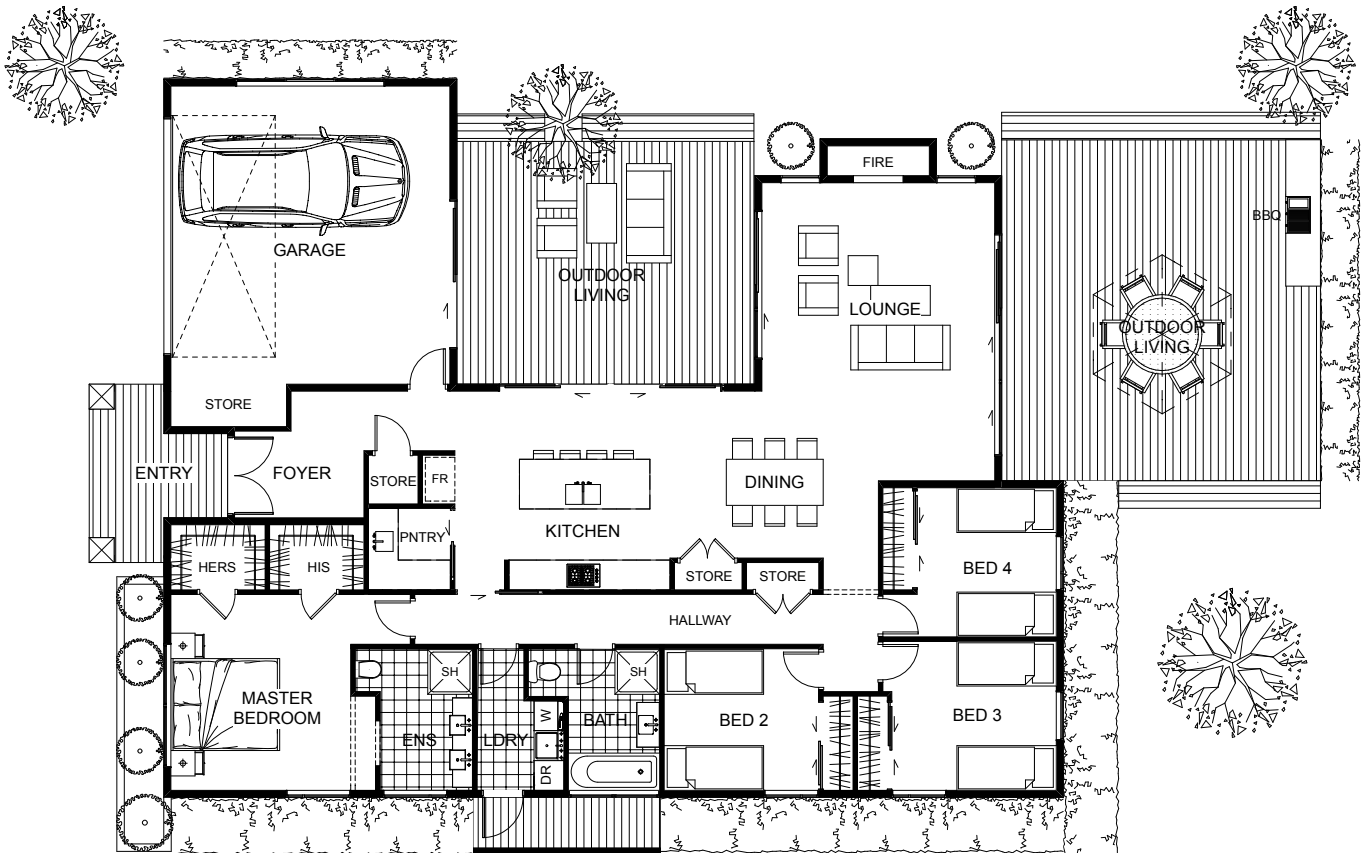






With the strong contrast between the two colours of the façade, this modern design encompasses everything that a home should have and much more. A lounge area with a fireplace surrounded by two paved patios gives the sense of spaciousness, smoothly bringing the outdoors inside, connecting it to the dining room and kitchen unobtrusively. One master, three bedrooms and a garage show that this is the house, which will always have a sense of quality and a place in the future.



Floor Area: 208m²

 2
  4
  2
  18.1m
  14.5m

ABN. 57152335021

Contact Jason Woodhams:

Phone: 04 0951 5051

Email: jasonwoodhams@bigpond.com

Visit us online : www.woodhamsbuilders.com.au

woodhams
BUILDERS

