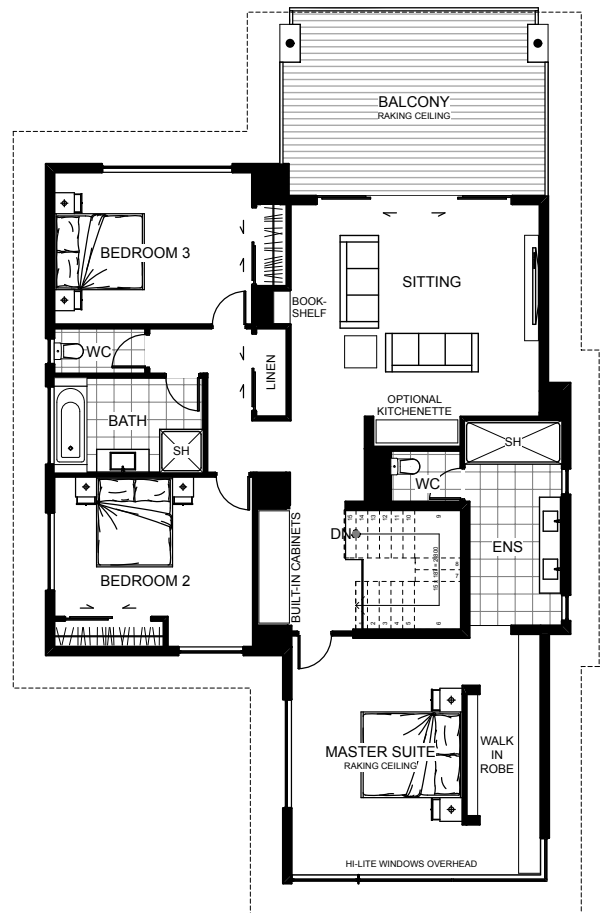
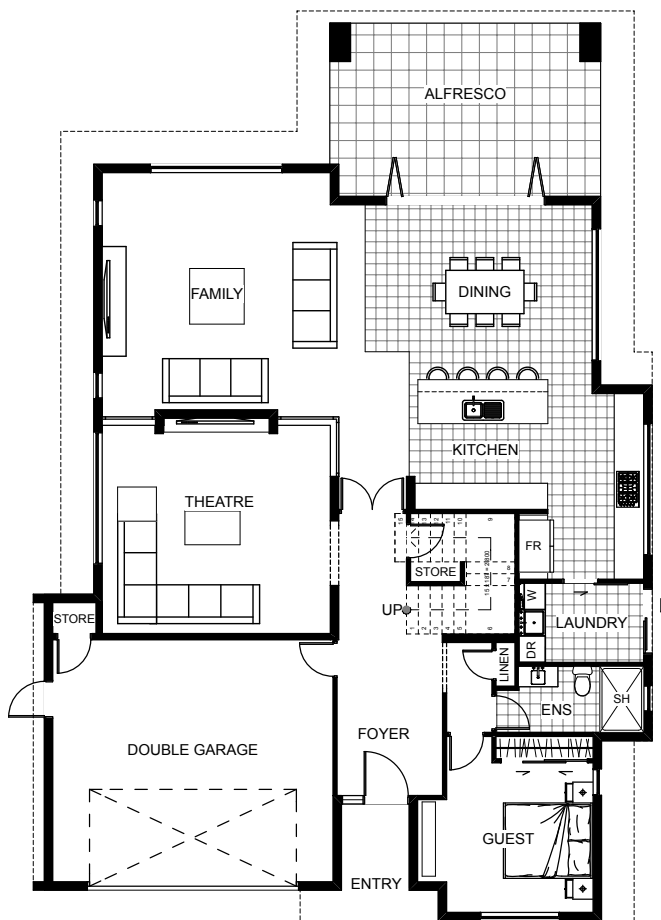






Edendale



The Edendale is a sleek modernist two story home with great alfresco flow integrated into both levels. From a sunken home theatre to the upper living area complete with spacious balcony. With a guest bedroom downstairs and three bedrooms upstairs, this four bedroom home reflects everything that is effortlessly perfect.



Floor Area: 362m²

 2
  3
  3
  14.1m
  20.4m

ABN. 57152335021

Contact Jason Woodhams:

Phone: 04 0951 5051

Email: jasonwoodhams@bigpond.com

Visit us online : www.woodhamsbuilders.com.au

woodhams
BUILDERS

