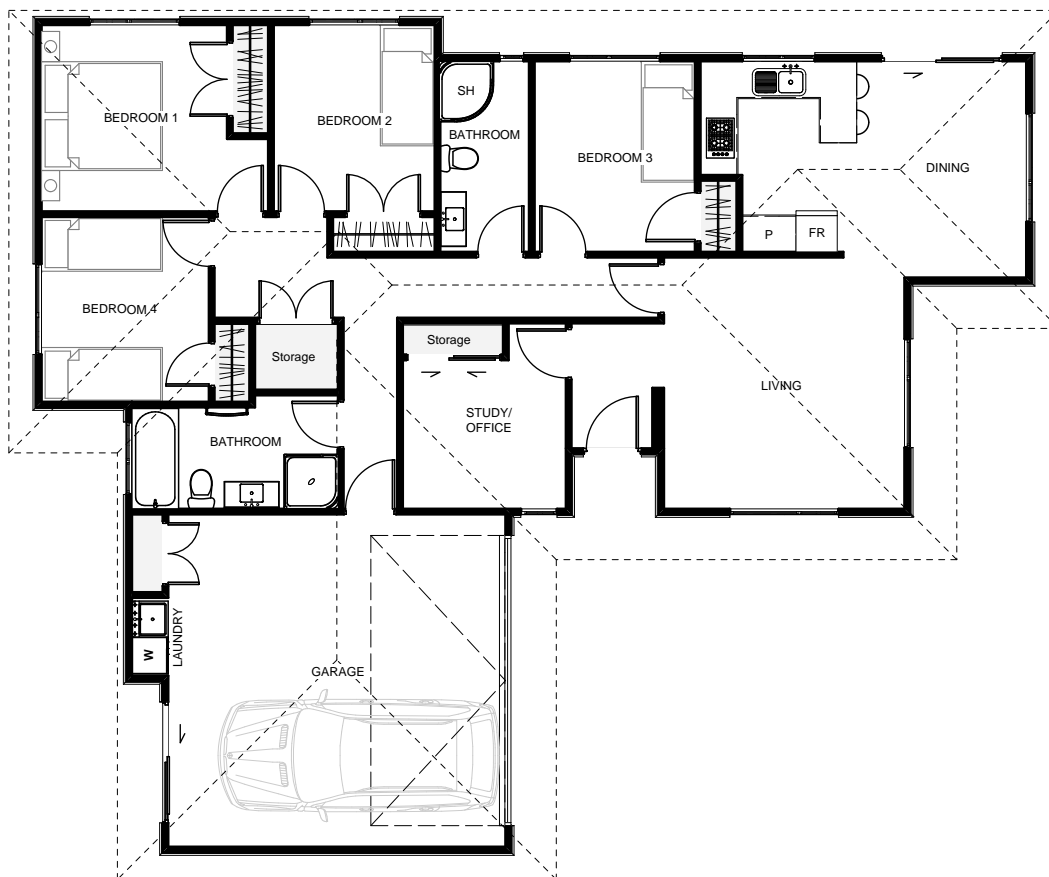





# Arlington



The 'Arlington' has a well-defined living layout with the dining & living slightly offset giving both spaces a feel of form & function. If you work from home the study lends itself to a client friendly access point and has a storage cupboard otherwise this room can clearly work as another bedroom! This home also has the bonus of generous wardrobes & great storage space.



Floor Area: 112m<sup>2</sup>

 2  4+  2  16.5m  13.8m

ABN. 57152335021

Contact Jason Woodhams:

Phone: 04 0951 5051

Email: [jasonwoodhams@bigpond.com](mailto:jasonwoodhams@bigpond.com)

Visit us online : [www.woodhamsbuilders.com.au](http://www.woodhamsbuilders.com.au)

**woodhams**  
• • • • BUILDERS

